

# POWER UP 45



**EFFEMME**

# VERSIONS

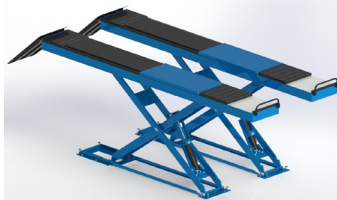
# POWER UP 45

POWER UP 45 N



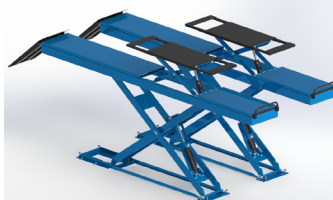
SMOOTH PLATFORMS

POWER UP 45 AS



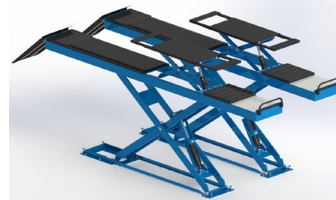
WHEEL ALIGNMENT

POWER UP 45 LT



SMOOTH platforms  
with  
LIFT TABLE

POWER UP 45 ASLT



WHEEL ALIGNMENT  
and  
LIFT TABLE

## MODULS



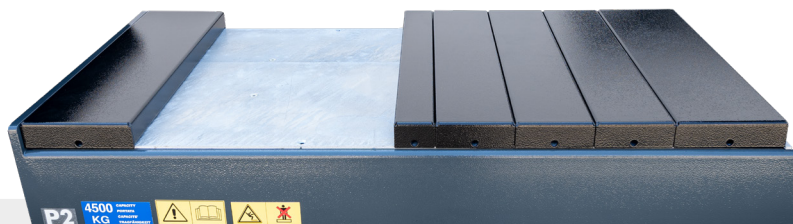
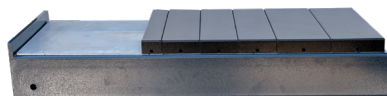
LIFT TABLE module

- ▶ Capacity: 3.500 Kg
- ▶ Platforms with double extensions



SLIDING PLATES module

- ▶ 3 different length available: 1.570 / 1.870 / 2.270
- ▶ Rotation angle: +/- 3°. Type of locking: **Pneumatic**



SPACE for TURNING PLATES / PLAY DETECTOR module

- ▶ Plane with hot galvanizing treatment
- ▶ 3 different length of space cover

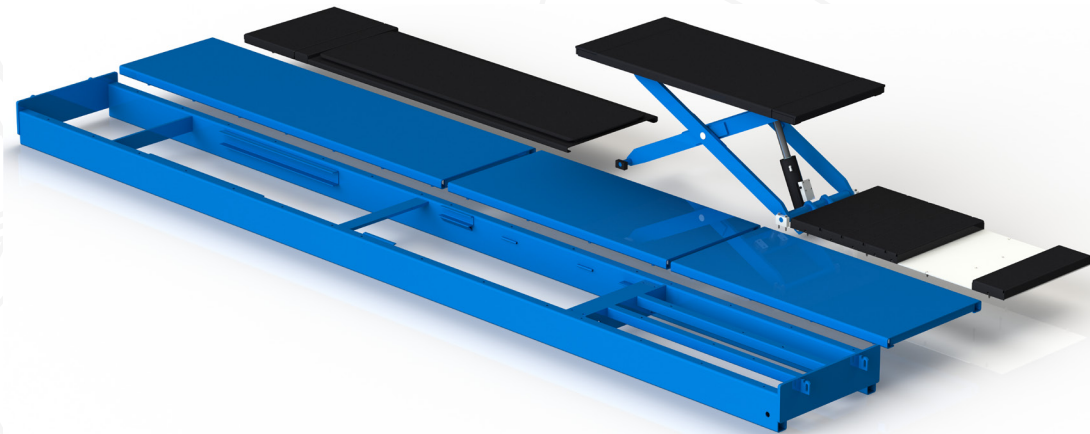


PLAY DETECTOR module

- ▶ 4 movement of +/- 50mm  
made by HTC factory

# MODULAR SYSTEM

# POWER UP 45



- ▶ All modules are screwable and the platforms do not require mechanical modifications
- ▶ Possibility to change version of the lift also after the purchase by changing the moduls
- ▶ The control unit is ready for any change of version

## DETAILS & FEATURES



**CYLINDERS**  
made by our factory **HTC**



**MECHANICAL SAFETY**  
rack on cylinder with cold  
galvanizing treatment



**CONTROL UNIT**  
with low voltage command (24V)  
and 4.3" touch screen operator  
panel



**SECURITY STATUS SENSOR**  
on mechanical safety rack



**PHOTOCELLS** detect any  
desynchronizations and  
immediately stop the lift



**ANTI-ROTATION** of pins

# POWER UP 45

## OTHER FEATURES

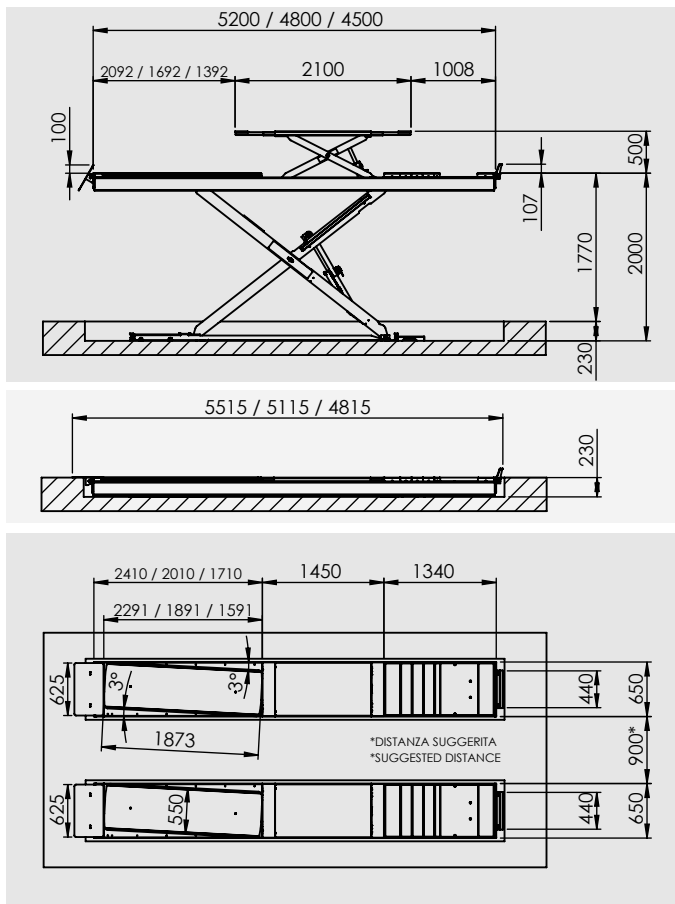
- ▶ Synchronism: **ELETTRONIC** thanks to the angular sensors
- ▶ Installation: **on floor** or **inground**
- ▶ Platforms length available: **4.5 / 4.8 / 5.2 meters**
- ▶ **Rails** for jacking beam
- ▶ **MAX PRESSURE VALVE** to prevent lifting of load exceeding the nominal capacity

## TECHNICAL DETAILS

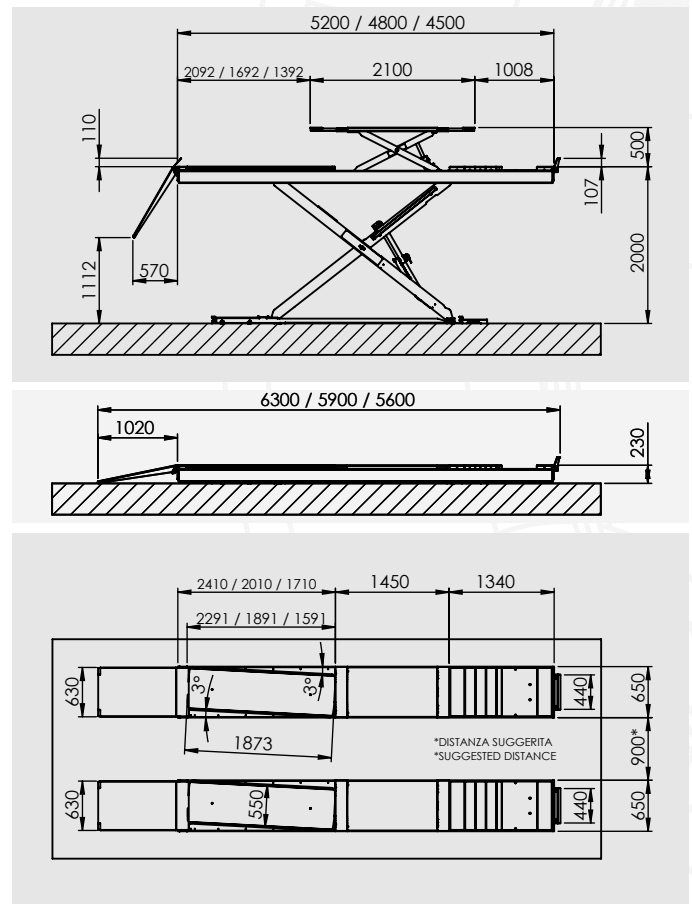
- ▶ Operation: **ELECTRO-HYDRAULIC**
- ▶ Capacity: **4.500 Kg**
- ▶ Weight: **1.850 / 2.400 Kg**
- ▶ Lifting time: **35 sec.**
- ▶ Lowering time: **35 sec.**
- ▶ Motor: **4 KW, 400/690 V, 50 Hz**
- ▶ Current: **8.75 A**
- ▶ Working temperature: **-10 °C / 40 °C**
- ▶ Working max pressure: **300 bar**

## LAYOUT

### INGROUND INSTALLATION



### ON FLOOR INSTALLATION



## STANDARD EQUIPMENT

- ▶ Painting color: **BLUE - RAL 5010, RED - RAL 3020, GREY - RAL7016**
- ▶ Primer treatment on platforms and bases
- ▶ Placement of the control unit 2 meters away from the lift
- ▶ **MECHANICAL SAFETY** rack on cylinder with cold galvanizing treatment



HTC srl - P.I. 01607910674  
Via degli elettricisti - 64025 Pineto ITALY  
Tel. +39 085 9463008 - info@effemme.biz

[www.effemmelifts.com](http://www.effemmelifts.com)



CERTIFICATE NO.  
18495/A/0001/UK/IT