

Be **FAST**



# V3300

WORRY-FREE  
WHEEL ALIGNMENT SYSTEMS

**JohnBean**

# THE FAST, FLEXIBLE WAY TO REV UP YOUR ALIGNMENT REVENUE.

Be **FAST**

Who needs more to worry about? We've designed a standalone, worry-free mobile wheel alignment system that is able to provide quick and accurate measurements to increase error-free repair services.

The V3300 alignment system is designed to guide technicians of multiple skill levels through an accurate alignment in less time, reducing errors.

Its advanced notification system monitors the entire alignment procedure in order to automatically correct and compensate for simple issues without slowing you down; ensuring that every alignment is done on time.

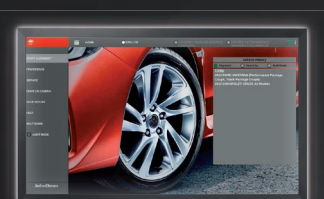
If you are looking for a worry-free wheel aligner you can trust to be accurate while saving you time and increasing your revenue, the V3300 is your system of choice.

## SHIFT YOUR REPAIR BUSINESS INTO HIGH-GEAR WITH THE V3300.

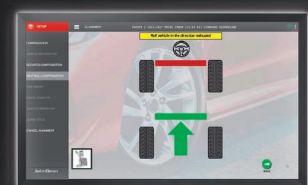


## EASY, INTUITIVE WORKFLOW

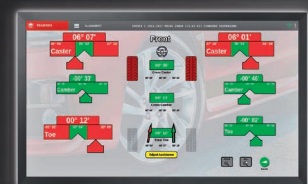
Designed together with technicians to provide all the features you need for core wheel alignment workflow, removing unnecessary steps with a clean and easy-to-use interface.



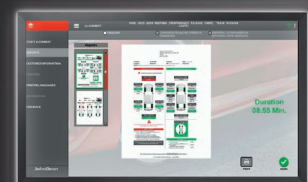
**01**  
**SELECT VEHICLE**



**02**  
**MEASURE**



**03**  
**ADJUST**



**04**  
**PRINT REPORT**



## RIDE HEIGHT MEASUREMENT

Measure the vehicle ride height to guarantee a proper adjustment.

The V3300 offers multiple options for ride height measurement, depending on the vehicle type and manufacturer.

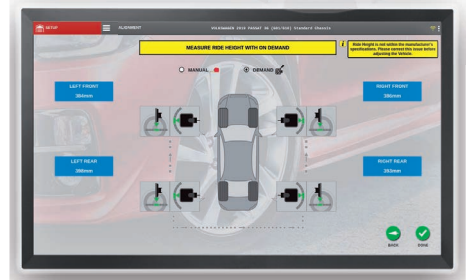
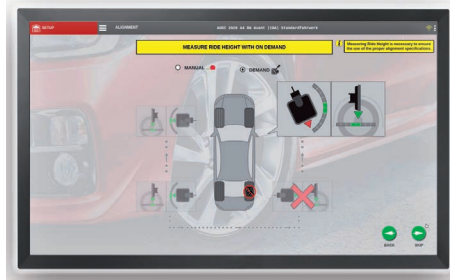
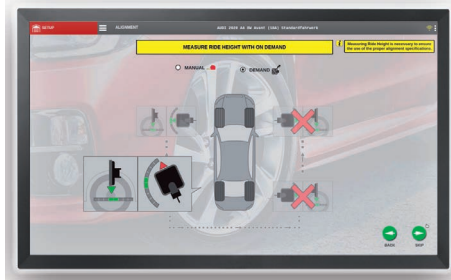
Eliminate manual data entry, speed up measuring, and increase accuracy using our specially designed, optional Ride Height Targets.

## FENDER TARGETS

No manual entry is required when using our ride height Fender Targets with easy suction cup attachment. Alignment specifications adjust automatically according to the ride height measurement.

## TARGET IMAGING POINTER (TIP)

Alternatively, the Target Imaging Pointer (TIP) measures ride height more accurately than manual measuring to obtain proper alignment specifications.

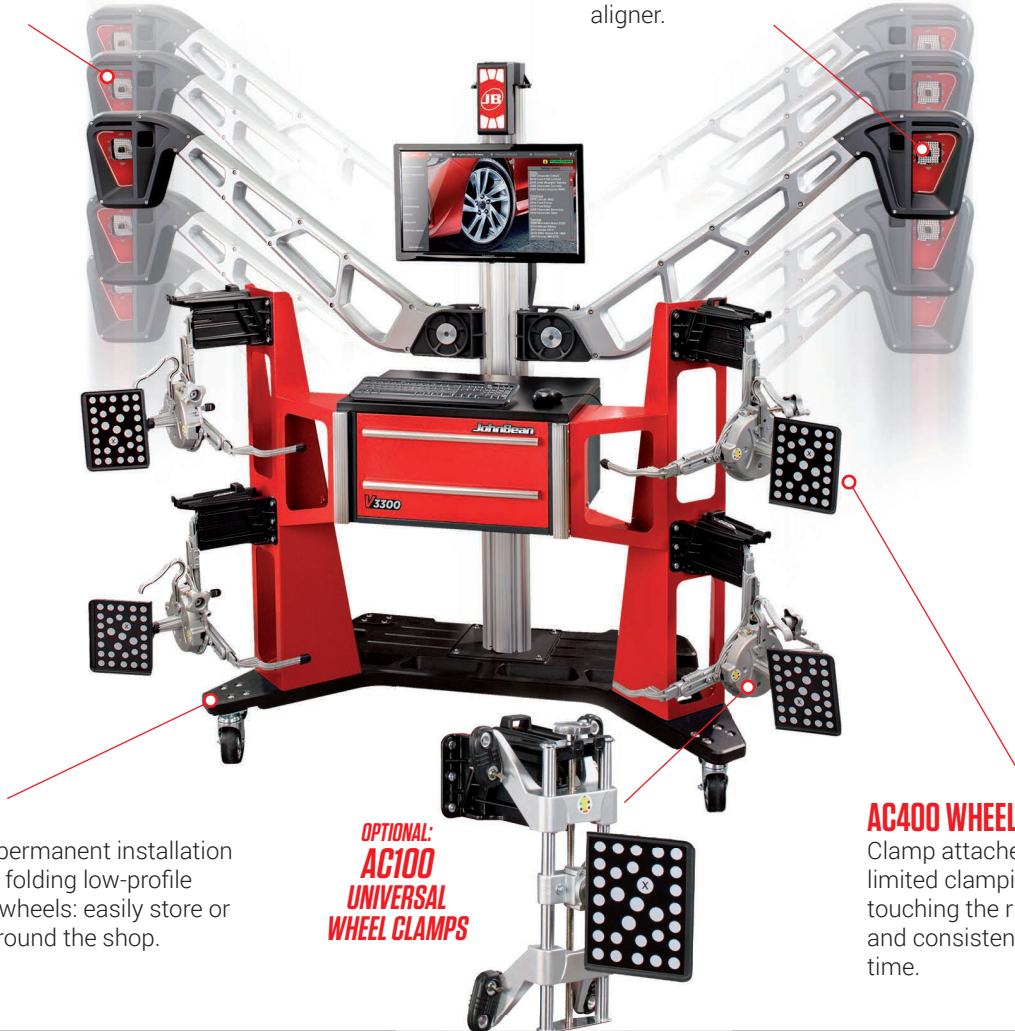


## AUTOMATIC VEHICLE HEIGHT TRACKING

The camera system follows the height of the vehicle, eliminating the need to adjust the aligner when you move the lift. Continuous third camera calibration provides accurate readings and reliable alignment results.

## VODI™

Guides the technician through the measurement process and reduces the amount of time spent walking back and forth from the vehicle to the aligner.



## FULLY MOBILE

No floor drilling or permanent installation necessary. Unique, folding low-profile beam and built-on wheels: easily store or move the aligner around the shop.

**OPTIONAL:  
AC100  
UNIVERSAL  
WHEEL CLAMPS**

## AC400 WHEEL CLAMP

Clamp attaches to the tyre with limited clamping force without touching the rim for a safe, fast and consistent placement every time.

## ADVANCED MEASUREMENTS

Measurements designed for advanced suspension troubleshooting and modified suspensions. Includes advanced ride height entry, ProAckermann, graphical caster trail, scrub radius and SAI.

## CROSS DIMENSIONS

Values for frame verification are provided to confirm that the suspension is square.

## WHEELS OFF ADJUSTMENT

Remove the wheel and attach the target directly to a brake rotor for easier access to adjustment.

## ALIGNMENT CHECK

Alignment check quickly identifies if a car needs adjustments. In less than a minute a simple printout shows Camber, Total Toe and Thrust angle. Improve alignment sales with alignment check.

## WHEEL DIAMETER

This measurement will notify the operator of potentially mismatched tyres or excessive tread wear.

## EZ-TOE

Our advanced software makes it easy to quickly and accurately measure toe angle, allowing technicians to turn the wheel to access challenging adjustment points without using a steering wheel holder.

# INCREASE PROFITS THROUGH PRODUCTIVITY

**WORK  
FAST**

The fastest camera we have ever offered, the optimized software flow, and the built-in notification system work together to provide fast and accurate readings; allowing you to work quickly while maintaining confidence the results will be correct.

**SAVE  
TIME**

Saving time in the alignment means you can complete the repair faster and do more alignments a day – increasing your profits while improving customer satisfaction.

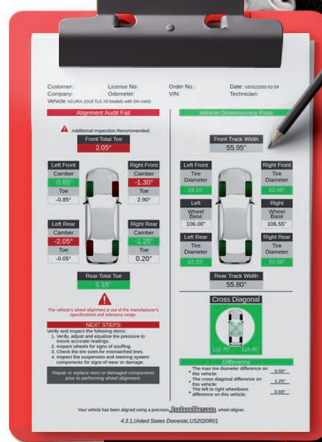
**ADDITIONAL  
BUSINESS**

## SELL MORE ALIGNMENTS

We can help you explain what additional repairs are needed. With features like Alignment Check, you can uncover alignment problems and pick up extra services with easy-to-read printouts in under a minute.

Automatic alignment measurement print-out includes:

- Track width
- Front and rear toe
- Camber
- Wheelbase
- Wheel diameter
- Cross dimensions



## IT'S FLEXIBLE!

The V3300 allows you to move it around the shop and perform wheel alignments in any bay.

## IT'S CONVENIENT!

Perform wheel alignment audit checks anywhere on the shop floor.

## IT'S COMPACT!

No fix installation. Integrated mobile base built on wheel, folding beams and space-saving design makes storage easier.



**JohnBean**

# OEM GUIDED PROCEDURES

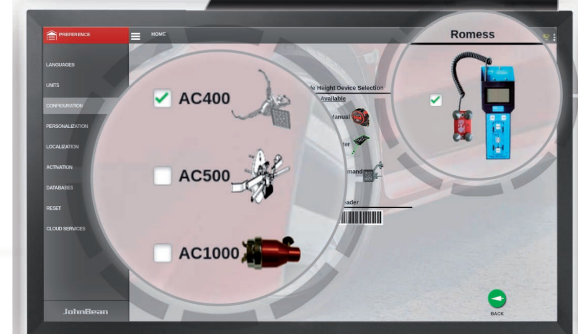
The software provides the recommended procedures defined by the manufacturer (including VAG and MB) and indicates the correct clamps for an accurate OEM-specified wheel alignment.



## OEM PROCEDURES



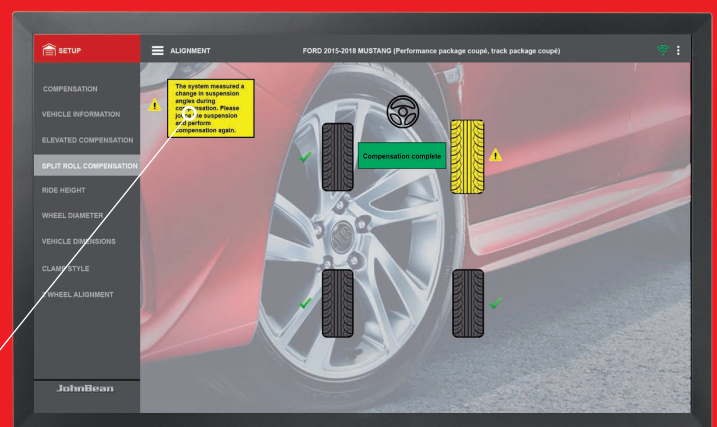
## SPECIFIC OEM CLAMPS & ROMESS



# STAY ON TRACK THROUGH EACH STEP NOTIFICATION SYSTEM

We call it "Compensate-Warn-Alert" but all you need to know is that the system will compensate almost any error made during the alignment. Whether it's due to suspension stress or loose components, the V3300 will quickly find and correct errors as they are made. If the system is unable to fix an error, the technician will be notified with the right instructions to fix it.

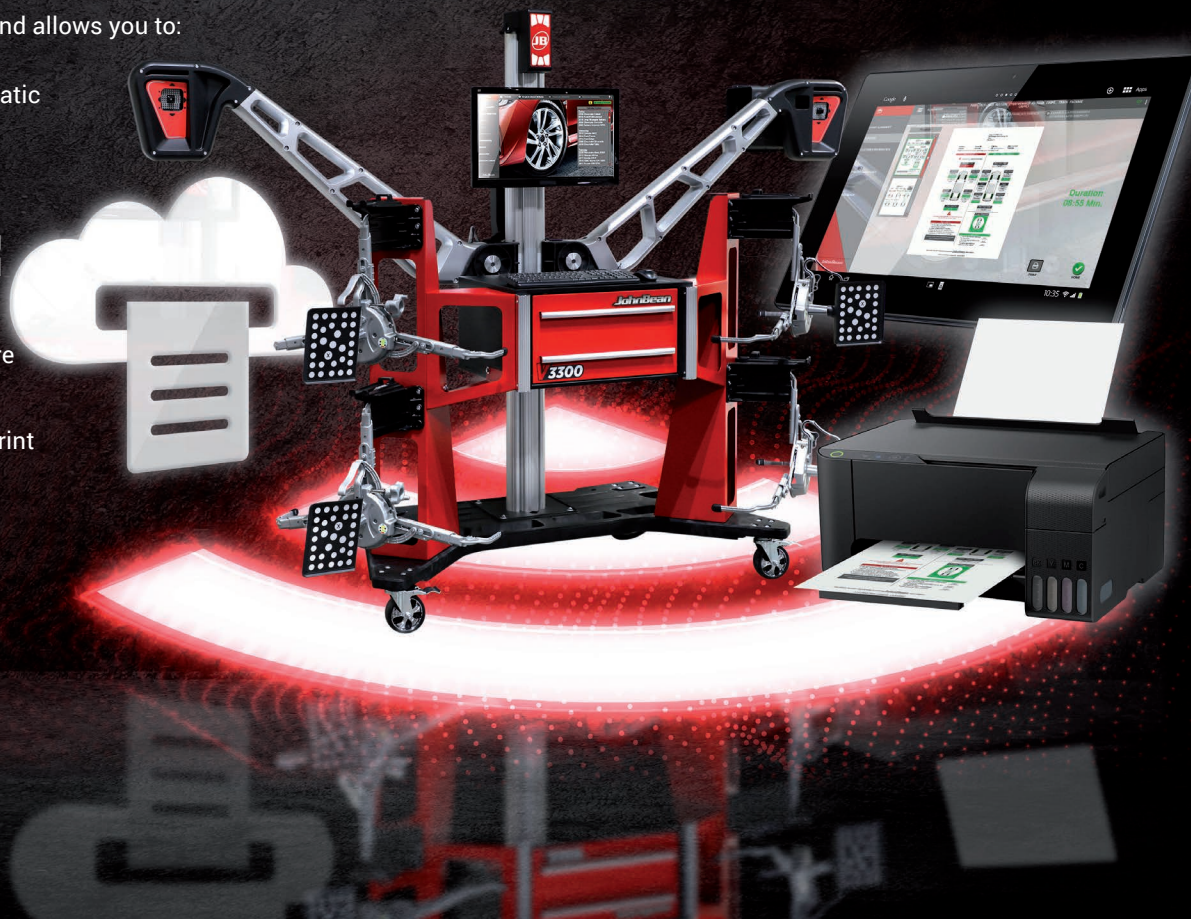
*The system measured an inconsistent rolling surface during compensation. Please check the rolling surface and perform compensation again.*



# MAXIMIZE PRODUCTIVITY

The V3300 is WiFi® enabled and allows you to:

- Stay up-to-date with automatic access to software and specification updates
- Connect a tablet to use as a secondary display during the alignment for increased mobility
- Save information to a secure cloud server and access reports remotely to send to customers via email or to print from anywhere in the shop



## TECHNICAL SPECIFICATIONS

Tyre Size (AC400)	19"-39" (48.3cm - 99.1cm)
Track Width	121.9cm - 243.8cm
Wheel Base	200.7cm - 457.2cm
Shipping Weight	247kg
Power requirements	100-230V
Display	24" TFT

## STANDARD ACCESSORIES

- Steering Wheel Holder
- Brake Pedal Depressor
- Color Inkjet Printer
- (2) Wheel Chock
- 24" Flat Panel Monitor
- Wheel Clamps with XD Targets

FIND A DISTRIBUTOR  
[www.johnbean.com/en/distributor](http://www.johnbean.com/en/distributor)

FRANCE  
+33 134 48 58 78

GERMANY  
+49 8634 622 0

ITALY  
+39 0522 733 411

UK  
+44 118 929 6811



Snap-on® Total Shop Solutions offers a wide range of garage equipment solutions for workshops, garages, car dealers and tyre shops, thanks to the specific solutions provided by its portfolio of premium brands. John Bean is a brand of TSS and is committed to product innovation and improvement. Therefore, specifications listed in this sell sheet may change without notice. ©2021 Snap-on Incorporated. John Bean is a trademark, registered in the United States and other countries, of Snap-on Incorporated. All rights reserved. All other marks are marks of their respective holders. Ss153546i 08/2021

